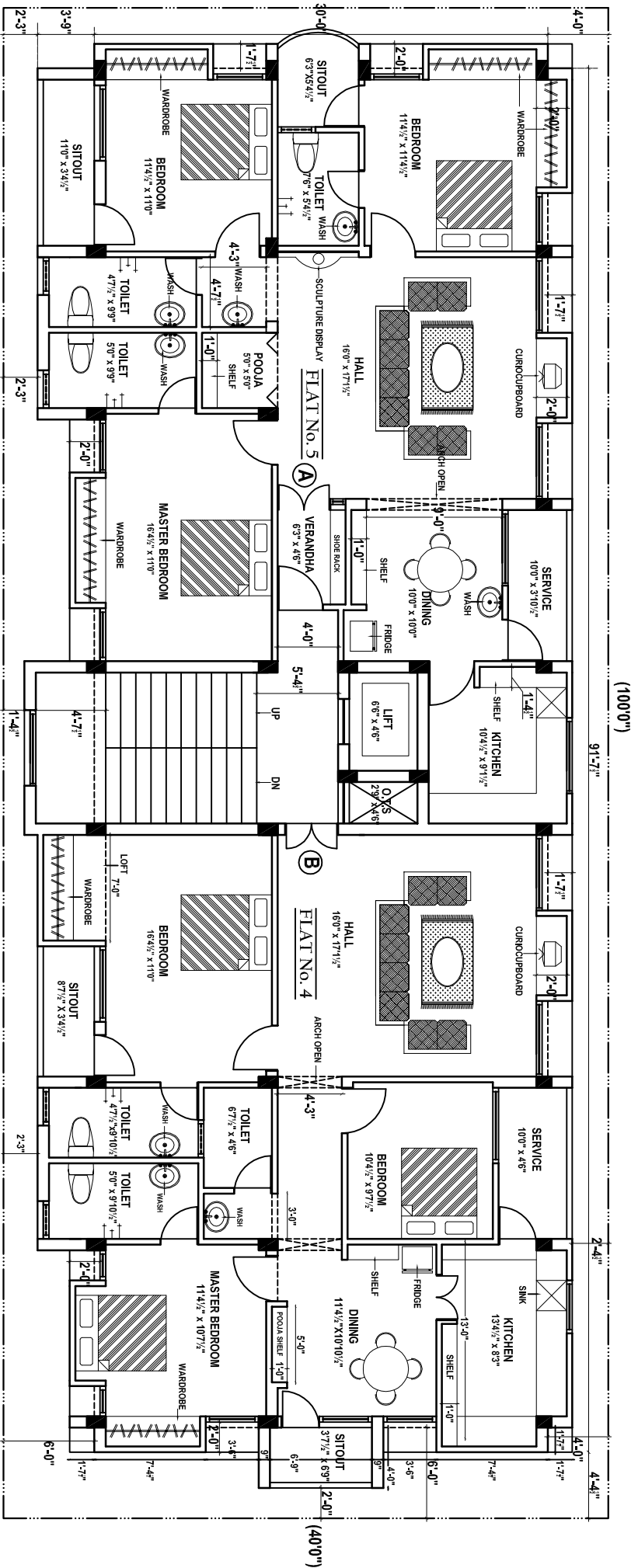


PROPOSED 'MANGHALAM NANDHANA' APARTMENT



MANGHALAM NANDHANA
 27 Geethapuram Main Road
 Srirangam, Trichy 620006

SECOND FLOOR PLAN



SUPER PLINTH AREA (A) : 1524.00 sqft., +146.00sqft.,
 1670.00 sqft.

SUPER PLINTH AREA (B) : 1460.00 sqft., +135.00 sqft.,
 1595.00 sqft.

AREA DETAIL